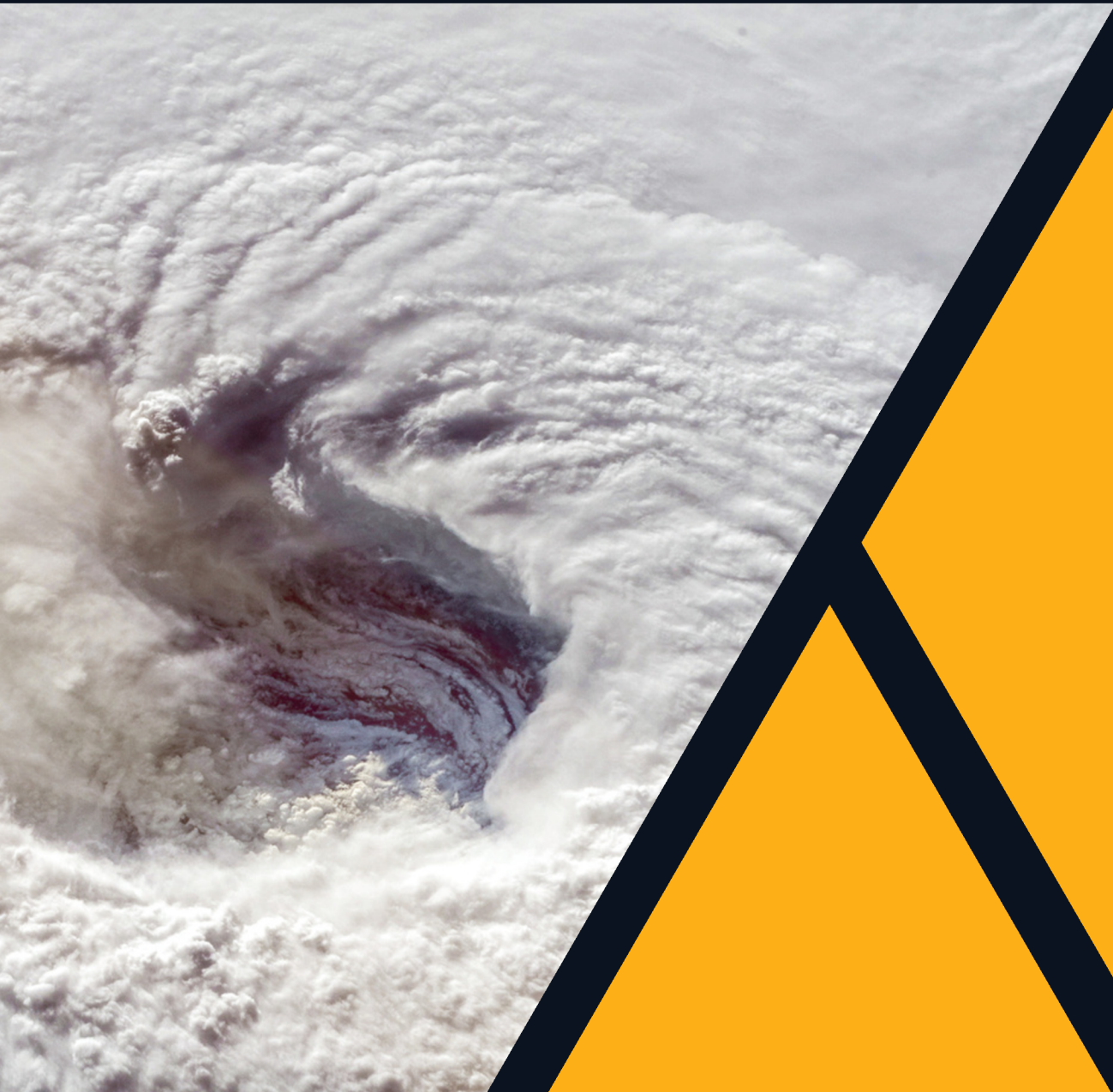




# HURRICANE READINESS GUIDE



2  
0  
2  
6



# Table Of Contents

- 1 Introduction
- 3 Hurricane Information
- 6 Shelters and Rules
- 8 Before the Storm
- 13 During the Storm
- 15 After the Storm
- 19 Disaster Kit Checklist
- 23 Hurricane Tracking Chart
- 24 Emergency Numbers

# Introduction

## PURPOSE OF THE GUIDE

This guide is designed to help individuals, families, and communities prepare for, respond to, and recover from hurricanes. It provides practical information on how to stay safe before, during, and after a storm. By following the recommendations in this guide, you can reduce the risks associated with hurricanes and ensure you and your loved ones are ready to act in an emergency.



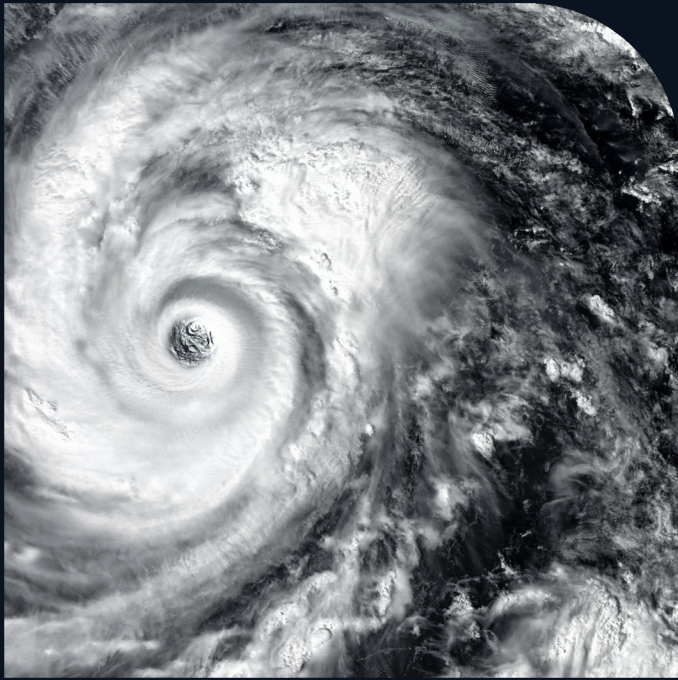
## UNDERSTANDING HURRICANES

Hurricanes are powerful tropical storms that form over warm ocean waters. They are categorized by wind speed using the Saffir-Simpson Hurricane Wind Scale, ranging from Category 1 (least severe) to Category 5 (most severe). In addition to strong winds, hurricanes can bring storm surge, heavy rainfall, inland flooding, and tornadoes.

Key hurricane components include:

- Eye: The calm center of the storm.
- Eyewall: Surrounding area with the strongest winds and rain.
- Rainbands: Spiraling bands of rain and thunderstorms extending outward.

Understanding how hurricanes work helps individuals prepare more effectively. A hurricane can change direction or intensity quickly, so it is essential to stay informed and take warnings seriously.



# Hurricane Information

## STORM CATEGORIES AND IMPACTS :

### TROPICAL DEPRESSION

*Sustained winds up to 38 mph.*

Minor coastal flooding possible  
Generally not a significant threat to structures  
Can produce localized heavy rainfall and flooding

### TROPICAL STORM

*Sustained winds of 39 to 73 mph*

Can cause downed trees and power lines  
Minor roof damage to well-built homes  
Coastal flooding from storm surge (2-4 feet)  
Flash flooding from heavy rainfall  
Power outages lasting hours to days  
Can spawn tornadoes with little warning

### HURRICANE

*Sustained winds of 74 mph or higher*

## SAFFIR-SIMPSON HURRICANE WIND SCALE

CATEGORY 1	74 - 95 MPH	SOME DAMAGE
CATEGORY 2	96 - 110 MPH	EXTENSIVE DAMAGE
CATEGORY 3	111 - 129 MPH	DEVASTATING DAMAGE
CATEGORY 4	130 - 156 MPH	CATASTROPHIC DAMAGE
CATEGORY 5	157 + MPH	CATASTROPHIC DAMAGE





# WATCHES AND WARNINGS:

## WATCHES AND WARNINGS

*Tropical storm conditions are possible, usually within 48 hours.*

- Wind speeds of 39–73 mph may affect your area
- Begin reviewing your emergency plan
- Check emergency supplies and restock if necessary
- Monitor local news and weather updates frequently
- Secure loose outdoor items that could become projectiles
- Consider voluntary evacuation, especially from low-lying areas

## HURRICANE WATCH

*Hurricane conditions are possible, usually within 48 hours.*

- Wind speeds of 74 mph or higher may affect your area
- Finalize your emergency action plan
- Prepare to board up windows and secure your home
- Fill vehicles with fuel and withdraw cash from ATMs
- Check prescriptions and medical supplies
- Prepare for potential evacuation orders
- Identify evacuation routes and emergency shelters


## TROPICAL STORM WARNING

*Tropical storm conditions are expected, usually within 36 hours.*

- Strong winds (39–73 mph) will likely impact your area soon
- Complete all storm preparations immediately
- Follow evacuation orders from local officials
- Move to higher ground if in flood-prone areas
- Expect power outages and interruptions to water service
- Travel will become dangerous as conditions deteriorate

## HURRICANE WARNING

*Hurricane conditions are expected, usually within 36 hours.*

- Destructive winds of 74+ mph will soon affect your area
  - Complete all preparations and follow evacuation orders immediately
  - If not evacuating, move to small interior room on lowest level
  - Stay away from windows, skylights, and glass doors
  - Turn refrigerator/freezer to coldest setting and keep closed
  - Charge electronic devices fully while power remains
  - Evacuation may become impossible as conditions worsen
- 

# PLANNING FOR AN EMERGENCY



Disaster kits and emergency supplies should be fully stocked by June 1, the start of hurricane season. Once a hurricane warning is declared, most of your preparations should be directed toward your home.

Remember to discuss your family emergency plan ahead of time. Your family may not be together when disaster strikes, so it is important to know how you will contact one another, how you will get back together and what to do in case of an emergency.

## STAY ALERT DURING HEAVY RAIN FALL

*In the event of heavy rainfall, be aware of street flooding, flash floods, and rockslides which can occur in the following areas. Residents and visitors should stay away from these areas until water levels subside.*

- A.T. Illidge Road, Round-a-bout, Philipsburg.
- Arch Road, Bible Baptist Church to Pool Bar de Snor.
- Beacon Hill Road, from Sunset Bar & Grill until the beginning of White Sands Road.
- Belvedere Border Point, Belvedere.
- Billy Folly Road, in front of the Atrium Hotel, Pelican.
- Emmaplein, in the area of Jump Up Casino, Philipsburg.
- L.B. Scot Road, from Emilio Wilson Park up to the Cake House Supermarket.
- Rhine Road, aka Mullet Bay Road, after Sonesta Maho Beach Hotel to the entrance of Cupecoy.
- Welgelegen Road, Cay Hill, from Welgelegen Road Roundabout until the One Tete Loke Roundabout.
- Well Road, Wellington Road, Orange Grove Road, side roads Cole Bay.
- Yrausquin Boulevard, in front of Fairway Supermarket and the intersection by St. Maarten Port Services, Point Blanche.
- Zagersgut, from Petro Plus Gas Station until the Seventh Day Adventist Church.



# SHELTERS

## HURRICANE SHELTER RULES

*In the event of a hurricane strike, persons who will seek safety in a shelter must follow and abide by the following information provided.*

- Weapons, alcohol, and drugs are not allowed.
- No obscene language.
- No stealing or destruction of property.
- No cooking in the shelter.
- No smoking.
- No sexual activity.
- No pets or animals allowed in the shelter.
- Keep your area clean at all times.
- Persons must be dressed appropriately at all times.
- Keep your valuables with you at all times
- Cell phone usage must not violate quiet area and lights out rules.
- Follow any instruction given by the shelter management team.

## MEDICAL AND SPECIAL NEEDS SUPPORT


*Inform shelter staff of any critical medical conditions upon arrival  
Bring clearly labeled medical supplies and medications*

## ESSENTIAL ITEMS CHECKLIST

### Personal Essentials

- Identification documents
- Prescription medications
- Personal hygiene items
- Spare clothing
- Portable phone charger/extra batteries
- Important medical information
- First aid kit

## FOR FAMILIES WITH CHILDREN

- Three-day supply of diapers and formula (for babies)
  - Comfort items (blanket, favorite toy)
  - Quiet entertainment (books, cards, small games)
  - Extra clothing and bedding
  - Special items for elderly or disabled family members
- 

# SHELTERS CONT.

## IMPORTANT DOCUMENTS (IN WATERPROOF CONTAINER)

- Passport
- Insurance papers
- Medical records
- Emergency contact information

## WHAT TO BRING

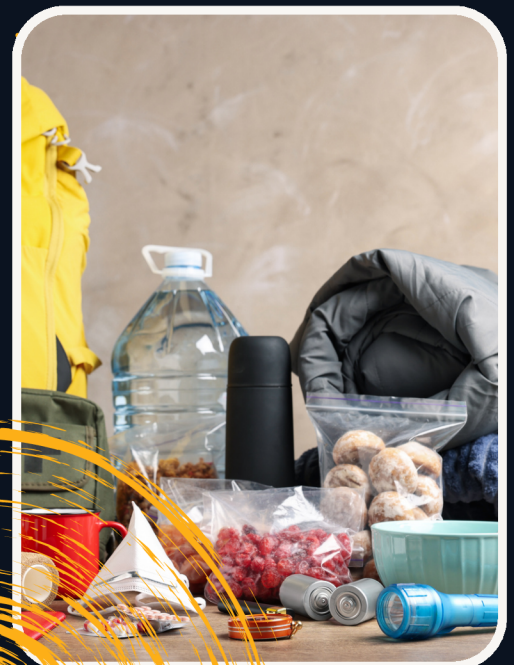
- Pack only essential items
- Bring enough non-perishable food for up to three days
- Carry a manual can opener
- Bring a battery-powered radio and flashlight with extra batteries
- Carry cash and credit cards
- Portable electronic devices should be fully charged

## WHAT NOT TO BRING

- Cooking equipment
- Furniture
- Alcoholic beverages
- Weapons
- Unnecessary large or bulky items

## PET MANAGEMENT

- Shelters do not accept pets
- Make arrangements to secure pets at home before evacuation
- Ensure pets have:
  1. Sufficient water
  2. Food for at least three days
  3. Separate, secure rooms
  4. Do not leave dogs and cats in the same room





# STORM PREP – BEFORE A HURRICANE

## PREPARE YOUR HOME

- Take detailed photos and videos of your home (both interior and exterior) for insurance documentation.
- Protect areas where wind can enter. Windows and doors should be secured with storm shutters. Another option is to board up windows with 5/8-inch plywood. Important: Tape does NOT prevent windows from breaking.
- Protect electronics with surge protectors and waterproof coverings.
- Bring in lawn furniture or other outdoor items not tied down that could become airborne.
- Withdraw cash from the bank and get fuel for your vehicle, generator and other gas-powered tools. Do this early to avoid long lines.
- Have multiple battery-powered light sources available and ready for use, including rechargeable options.
- If power is lost, lighting will be poor inside, so keep heavy-traffic areas free of clutter.
- Repair or replace broken or damaged fences.
- Secure loose rain gutters and downspouts and clear any clogged areas or debris.
- Inspect the roof for loose tiles, shingles or debris.
- Insurance Check: Verify you have adequate homeowners, flood and wind insurance. Review policy details and coverage limits.
- Make bed rolls from your existing comforters and blankets.
- If you will be evacuating your home for the storm, turn off the power at the main circuit breaker before leaving.
- Trim trees and shrubs well before hurricane season to minimize debris and damage risks.

## WINDOWS AND DOORS

- Windows and doors should be secured with storm shutters or by boarding up windows with 5/8-inch plywood. Inspect existing shutters to ensure they are in good working order.
- Remember: Tape does not prevent windows from breaking.
- Once your windows and doors are shuttered or boarded, it will be more difficult to get out in the case of an emergency, so make sure that you and everyone in the house is aware of the available exits.
- Metal hurricane shutters are reliable and economical, and you can choose from several different types. Each type has its sets of pros and cons, so be sure to do your research before committing to a type of metal hurricane shutters.
- Windows with impact-resistant glass have become more common over the years, and the technology has improved to the point that they can withstand Category 5 wind conditions. Impact-resistant glass is expensive, but it can also help reduce insurance costs.
- Be sure to reinforce garage doors and tracks or replace with a hurricane-tested door.

## DISASTER SUPPLY KIT

Prepare a disaster kit with essential supplies for at least 7 days:

- Water (1 gallon per person per day)
- Non-perishable food and manual can opener
- First aid kit and prescription medications
- Battery-powered or hand-crank radio
- Flashlights and extra batteries
- Portable power banks for mobile devices
- Personal hygiene items
- Important documents in waterproof container
- Cash (small denominations)
- Face masks and hand sanitizer

## PREPARE YOUR BOAT

- If you own a boat, secure it properly at least 48-72 hours before a storm approaches. Use double lines at a marina or consider dry-dock storage. Never try to ride out a hurricane in your boat.
- Consolidate all records, including insurance policies, a recent photo of your vessel, boat lease agreement with the marina or storage area, and telephone numbers of appropriate authorities.
- Evidence shows that boats stored on land fare better on average in a hurricane compared to boats kept in the water.
- Trailer boats should be removed from the water and securely stored at least 48 hours before a hurricane is expected to make landfall.
- Moor the boat in a previously identified safe area.
- Purchase necessary hurricane materials such as additional mooring lines, crew anchors, fenders, fender boards, chafing gear and anchors.
- After you have made anchoring or mooring provisions, remove all moveable equipment such as canvas, sails, dinghies, radios, cushions, Biminis and roller furling sails.

## PREPARE YOUR BUSINESS

- Back up critical computer data to cloud storage and keep physical backups off premises.
- Make a complete inventory of your business and take plenty of photos and videos.
- Make sure employee emergency contact information is up to date, and that you have an employee communication plan in place, which includes a designated out of town phone number where employees can check in and receive company information.
- Create procedures for hurricanes so employees will know what to do and post them in advance.
- Protect electronic equipment from possible water damage.
- Have extra cash and blank checks in case extra money is needed after the storm.
- Establish a temporary location for business operations in case your facility is damaged.
- Identify a safe room for employees who must remain in the building.
- Give employees enough time to secure their homes and families.
- Secure the building and items that cannot be brought inside.
- Consider business interruption insurance if you don't already have it.

## CONSTRUCTION SITES

- In the event of a tropical storm warning or hurricane watch, licensed contractors are obligated to secure their work sites.
- Potentially hazardous objects must be fastened down or removed.
- Construction materials, tools, and equipment should be secured or removed from the site.
- Scaffold should be reinforced or dismantled if possible.
- Cranes should be secured according to manufacturer specifications.

## TOURISTS

- Listen to announcements from your hotel, cruise line or airline.
- Be sure to follow any orders issued by local officials, such as evacuation and sheltering.
- Stay tuned to official government sources for updates:
- Official website: [www.sintmaartengov.org](http://www.sintmaartengov.org)
- Radio: 107.9 FM
- Social media: Follow Government of Sint Maarteng / SXMGOV on Facebook, Instagram, LinkedIn and Youtube.
- Register with your country's embassy or consulate upon arrival.
- Keep your travel documents and identification with you at all times.
- Know the location of the nearest shelter from your accommodation.
- Have a communication plan to contact family back home.

## **GASOLINE STORAGE AND GENERATORS**

- Store fuel in an approved container, holding five gallons or less, in a cool, dry, ventilated and secure area, away from appliances. Keep it out of the reach of children.
- Generators must only be operated outside of inhabited structures in a well ventilated area away from windows, doors, vents or other openings. They should NOT be operated on the balcony of a multi-unit structure.
- Never operate a generator indoors – carbon monoxide poisoning is a serious risk.
- Test your generator before hurricane season and maintain adequate fuel supply.
- Consider investing in solar-powered chargers or battery banks as backup power sources.

## **WASTE DISPOSAL PREPARATIONS**

- Dispose of household and yard trash before a storm.
- Landscapers and residents should not blow grass clippings onto sidewalks, streets and storm drains, which can lead to street flooding. Instead, they should be bagged or blown back onto the lawn where they can serve as natural mulch.
- Secure your trash and recycling carts in a garage, utility shed or covered patio.
- Do not begin any tree pruning or cleanup activities, or place trash on the curb, during a tropical storm or hurricane watch or warning.
- Clear gutters and drainage paths to help prevent flooding.

## **WATER SUPPLY**

- Rather than buying bottled water, invest in reusable plastic water containers for your family.
- Fill containers with potable water once a hurricane warning is announced. Plan for at least one gallon per person, per day for seven days.
- In addition, keep other containers two-thirds full with potable water and place them in your freezer for ice after a storm.
- To sanitize containers before filling: Wash them out with soap and water and rinse them well. Next, fill the container with a solution of one tablespoon of unscented household chlorine bleach – the kind used for laundry – per gallon of water. Let it sit for 10 minutes, then pour out the solution and rinse the container.
- Keeping water stored for too long could attract harmful bacteria and make the water taste stale, so wait until a hurricane warning is announced.
- Plastic water containers are available in a variety of sizes, from four to 10 gallons or more, and some are collapsible or can be folded easily for storage. They're built to last for years, so you'll save money in the long run.
- Fill bathtubs with water for non-drinking purposes like flushing toilets.

## PET PREPAREDNESS

Hurricane season runs from June 1 through November 30. Whatever plans you make for yourself, remember to include your pets. If you're riding out the storm in the home of a family member, friend or neighbor, take your pets with you.

If you stay at home, remember to stay together. Keep your pet in a crate or carrier and find a safe area where you will all be together. Keep their collar and tag on in case you get separated. Before disaster strikes, pet owners are encouraged to be prepared before, during and after a disaster.

## PET SUPPLY AND EQUIPMENT CHECKLIST:

- Dry/Wet food for at least 2 weeks
- Manual can opener for canned food
- Two weeks supply of water
- Bowls
- A portable carrier, for each pet, large enough to stand and turn around in
- Dog leash and muzzle if required
- Dog license/ID on collar (consider microchipping pets before hurricane season)
- Proof of vaccines and medical records
- Medications (2-week supply)
- Litter, litter box, and litter scooper for cats
- Paper towels
- Disinfectant
- Hand Sanitizer
- Comfort items and toys
- Recent photos of your pets (in case they get lost)
- Contact information for local pet-friendly shelters





# STAYING SAFE

Shelters should only be considered as last resort. Once an evacuation order is given, a list of open shelters will be announced. Details will be posted / announced on:

- [www.sintmaartengov.org](http://www.sintmaartengov.org)
- [www.facebook.com/sxmgov](https://www.facebook.com/sxmgov)
- SXMGOV Radio 107.9FM
- The Department of Communication WhatsApp Emergency Groups

## BOATS

If you own a boat, remember to secure it properly:

- Use double lines at a marina
- Consider dry-dock storage
- Never try to ride out a hurricane in your boat

## STORM SURGE ZONES

Storm surge is the greatest threat to life and property from a hurricane. It occurs when water from the ocean is pushed on shore by the force of tropical storms or hurricanes.

A Storm Surge Planning Zone is an area that could be affected by a storm surge of 1 1/2 feet or higher during a hurricane. Evacuation decisions are heavily predicated on storm surge planning.



# DURING THE STORM

- Monitor these channels for weather updates and official instructions:  
[www.facebook.com/sxmgov](https://www.facebook.com/sxmgov)  
[www.facebook.com/sxmweather](https://www.facebook.com/sxmweather)  
[www.sintmaartengov.org](https://www.sintmaartengov.org)  
[www.meteosxm.com](https://www.meteosxm.com)  
*SXMGOV Radio 107.9FM*  
*Government of Sint Maarten Youtube Channel*
- Stay indoors, preferably in a room with no windows
- Take your emergency kit and disaster supplies with you if you move from room to room or evacuate to a shelter
- If flooding threatens your home, turn off electricity at the main breaker
- Use flashlights, not candles or kerosene lamps, as your light source
- Avoid using the phone and do not bathe or shower during the storm
- If you lose power, turn off all major appliances
- Do not go outside during the eye of the storm; the calm is brief before hurricane-force winds return
- Keep children informed about what's happening and watch for signs of stress
- Keep animals in their carriers or crate
- If your home begins to come apart, get in the bathtub and pull a mattress over you to protect yourself from debris





# POST STORM SAFETY


## IMMEDIATE SAFETY MEASURES

Many disaster-related injuries occur in the aftermath of a tropical storm or hurricane. Here are ways to stay safe:

- Remain inside until local authorities say it's safe to go outside
- If you must go outside, beware of fallen objects and downed electrical wires
- Report downed power lines to GEBE immediately via their emergency line
- Inspect your home for damage to ensure it's safe to stay there, and check for gas leaks
- Document all damage with photos and videos using your smartphone before beginning cleanup
- Stay out of areas with extensive storm damage
- Obey all curfew and emergency orders
- Do not operate charcoal grills, propane camping stoves or generators indoors
- Use battery-powered lanterns and flashlights instead of candles

## GENERAL RECOVERY GUIDELINES

*After confirming everyone's safety and once authorities have declared the area safe:*

- Keep residential and commercial debris in separate piles if you live in a mixed-use area
  - Place debris piles on the right-of-way, away from fences, mailboxes, storm drains, manholes and low-hanging wires
  - When clearing storm debris, use a broom instead of a hose to conserve water
  - Sweep and bag debris to prevent clogging storm drains and causing sewage overflows
  - Shut off electrical power and natural gas or propane tanks to avoid fire, electrocution, or explosions
  - If you suspect a gas leak, turn off the main gas valve, open all windows, and leave the house immediately
  - Never drive or walk through standing water (it may be deeper than it appears and contain hidden hazards)
  - When using power equipment, always wear a safety face shield/eyeglasses and gloves
  - Contact your insurance agent and document everything with photos/videos
  - Store all documentation in cloud storage when possible to prevent loss
  - Keep detailed records of repair and cleaning costs with receipts
  - Be patient and careful—cleanup after a storm takes time
- 



## COMMUNICATION DURING RECOVERY

- Use text messages instead of calls when networks are congested
- Keep portable battery packs/power banks charged for emergency phone use
- Have a battery-powered or hand-crank radio for emergency information
- Follow official Sint Maarten government and emergency services social media accounts
- Check the government website ([www.sintmaartengov.org](http://www.sintmaartengov.org)) for updates and resource
- Establish a communication plan with family members

## GENERATOR SAFETY:

- Place generators outdoors at least 20 feet (6 meters) from any window, door, or vent
- Install battery-operated carbon monoxide detectors in your home when using a generator
- Use only extension cords rated for outdoor use with generators
- Never connect generators directly to your home's wiring (backfeeding) without proper transfer switches
- Generators can become fire hazards when power is restored and can endanger line workers

## WATER DAMAGE AND MOLD PREVENTION

*After ensuring no structural, electrical, or gas-related hazards exist:*

- Address wet materials within 24-48 hours to prevent mold growth
- Wear N95 masks, gloves, and eye protection when cleaning moldy materials
- Walls, hard-surfaced floors, and household surfaces should be cleaned with soap and water
- Disinfect surfaces with a solution of one cup of bleach to five gallons of water
- Pay particular attention to surfaces that contact food and children's play areas
- Wash all linens and clothing in hot water or dry clean them
- For items that cannot be washed (mattresses, upholstered furniture), air dry in the sun and spray thoroughly with a disinfectant
- Steam clean all carpeting that can be saved
- If sewage has backed up into the house: Wear rubber boots and waterproof gloves during cleanup. Remove and discard contaminated materials that cannot be disinfected (wall coverings, cloth, rugs, drywall)
- Remove all wet or damaged carpeting and drywall to prevent mold



## ELECTRICAL SAFETY

*Your electrical system may have been damaged:*

- If you see frayed wiring, sparks when restoring power, or smell something burning with no visible fire, immediately shut off the electrical system at the main circuit breaker
- Consult GEBE before using electrical equipment, including power generators

## FOOD SAFETY

- Discard any refrigerated food if:
- Power has been out for more than 4 hours
- Food has been above 4°C (40°F) for more than 2 hours
- Food has an unusual odor, color, or texture
- When in doubt, throw it out
- Keep refrigerator and freezer doors closed as much as possible during outages
- Food in a full freezer will stay frozen for about 48 hours (24 hours if half-full)
- Use coolers with ice for temporary food storage
- Never taste food to determine its safety

## HOME REPAIR AFTER THE STORM

*If your home is damaged and you're hiring a home repair contractor:*

- File a claim with your insurance company first
- Know your contractor: call references and beware of scams
- Check complaint history
- Verify the contractor's license and insurance
- Obtain at least three estimates
- Get all promises in writing through a detailed contract
- Avoid paying large sums of money upfront (10-20% is standard)
- Pay by credit card instead of cash to ensure better protection
- Take photos of all work completed before making payments

## PRICE GOUGING

*If a state of emergency is declared by the Prime Minister, price gouging regulations come into effect:*

- Price gouging is considered an "unconscionable price," determined by comparing the price during an emergency with what was charged for the same item during the preceding 30-day period
- To report price gouging, email [idez.inquiries@sintmaartengov.org](mailto:idez.inquiries@sintmaartengov.org)



**Hurricane**  
AHEAD →

## SWIMMING POOL BARRIERS

- *Repair or replace damaged pool barriers as a priority (even empty pools pose a safety threat)*
- *Install temporary contractor safety mesh available at local home improvement stores until permanent repairs can be made*
- *If your swimming pool is not functioning normally, add chlorine regularly to prevent algae growth and mosquito breeding*



## MOSQUITO CONTROL

*Rainy, wet conditions after a hurricane can increase mosquito populations:*

- Empty standing water from children's toys, uncovered boats, watercraft, trash cans, and lids
- Repair screening on windows, doors, porches, and patios
- Avoid being outdoors at dusk and dawn when mosquitoes are more likely to bite
- Dress in light, long, and loose clothing that covers the skin
- Use insect repellents containing the EPA-recommended ingredient DEET
- Consider treating yard areas with mosquito control products
- Report large mosquito breeding areas to local health authorities





# Disaster Kit Checklist

Don't let a hurricane catch you off guard. Being prepared is key to staying safe. Use this comprehensive checklist as you shop and store your supplies. Keep items you would most likely need during an evacuation in a large, easy-to-carry waterproof container, a camping backpack, or a duffle bag.

*Remember: This is a comprehensive list. Prioritize based on your specific needs, storage capacity, and personal circumstances.*

## WATER & FOOD SUPPLIES

- 1 gallon (4 liters) of drinking water per person per day (minimum 7-day supply)
- Water purification tablets or portable filter
- Additional water for hygiene purposes

## READY-TO-EAT FOOD

- Canned fruits and vegetables
- Canned/boxed juice
- Ready-to-eat canned soups and meats
- Canned pasta and beans
- Peanut butter and jelly
- Bread (store in freezer until needed)
- Fresh fruits with longer shelf life (apples, oranges)
- Crackers and cookies in sealed packages
- Nuts, dried fruits, and trail mix
- Granola and energy bars
- Dry cereal
- Powdered milk or shelf-stable milk alternatives
- Protein/meal replacement drinks
- Hard candies

## MINIMAL-PREP FOOD

- Rice
- Pasta and pasta sauce
- Instant noodles
- Boxed meals
- Instant mashed potatoes
- Oats
- Cooking oil, salt, pepper, sugar
- Local seasonings and spices

## PET SUPPLIES

- 7-day supply of dry/canned pet food
- Water for pets (1 gallon per pet per day)
- Leash, collar, and ID tags
- Water and food bowls
- Pet carrier or crate
- Pet medications and medical records
- Recent photos of pets (in case they get lost)
- Litter/pan for cats, waste bags for dogs
- Comfort items (toys, blankets)



# Disaster Kit Checklist cont.

## SANITATION & PERSONAL CARE

- Toilet paper
- Moist towelettes/wipes
- Sanitary napkins and tampons
- Hand sanitizer
- Bar soap and liquid soap
- Toothbrush and toothpaste
- Deodorant
- Insect repellent (with DEET)
- Sunscreen
- First aid kit (see detailed list below)
- Prescription medications (2-week supply)
- Spare eyeglasses or contact lenses with solution
- 5-gallon bucket with lid (emergency toilet)
- Heavy-duty garbage bags with ties
- Chlorine bleach and medicine dropper (for water purification)
- Feminine supplies

## BABY SUPPLIES

- 7-day supply of diapers and
- wipes
- Formula or baby food
- Bottles and sippy cups
- Rash ointment
- Extra clothes
- Baby medications
- Mosquito netting for cribs
- Baby carrier
- Small toys or comfort items

## CLOTHING & BEDDING

- Complete change of clothing per person
- Sturdy, closed-toe shoes
- Rain gear (poncho, umbrella)
- Hat for sun protection
- Blankets or sleeping bags
- Moisture-wicking underwear and socks
- Light jacket

## KITCHEN & FOOD PREP

- Manual can opener
- Aluminum foil
- Paper towels/napkins
- Paper plates and cups
- Plastic utensils
- Food storage bags or containers
- Dish liquid soap
- Portable camp stove or grill
- Charcoal or propane
- Lighter and matches in waterproof container
- Lighter fluid
- Cooler for perishable items
- Ziplock bags of various sizes



# Disaster Kit Checklist cont.

## TOOLS & EMERGENCY ITEMS

- Multi-tool or basic tool kit
- Work gloves
- N95 masks or dust masks
- Duct tape
- Rope or paracord (50 ft)
- Plastic sheeting/tarps
- Battery-powered or hand-crank radio
- Flashlights (1 per person)
- Extra batteries
- Solar chargers for devices
- Fully-charged portable power banks
- Fully-charged cell phone
- Whistle to signal for help
- Battery-powered or hand-crank fan
- Fire extinguisher

## ENTERTAINMENT & COMFORT

- Books, games, cards
- Notebooks and pens
- Comfort items for children  
(stuffed animals, etc.)
- Battery-operated fan
- Small battery-operated radio

## ELECTRONICS PROTECTION

- Surge protectors for all electronics
- Waterproof covers for electronics
- Backup of important digital files
- Unplugging guidelines for various appliances

## FIRST AID KIT

- Adhesive bandages (various sizes)
- Sterile gauze pads and rolls
- Adhesive tape
- Scissors and tweezers
- Antiseptic wipes
- Antibiotic ointment
- Hydrocortisone cream
- Pain relievers (acetaminophen (i.e. paracetamol / dolipran), ibuprofen (i.e. advil, motrin))
- Anti-diarrheal medication
- Antacids
- Thermometer
- Non-latex gloves
- Instant cold compress
- Scissors and safety pins
- First aid instruction booklet
- Mosquito bite treatment
- Anti-itch cream



# Disaster Kit Checklist cont.

## FINANCIAL & DOCUMENTATION

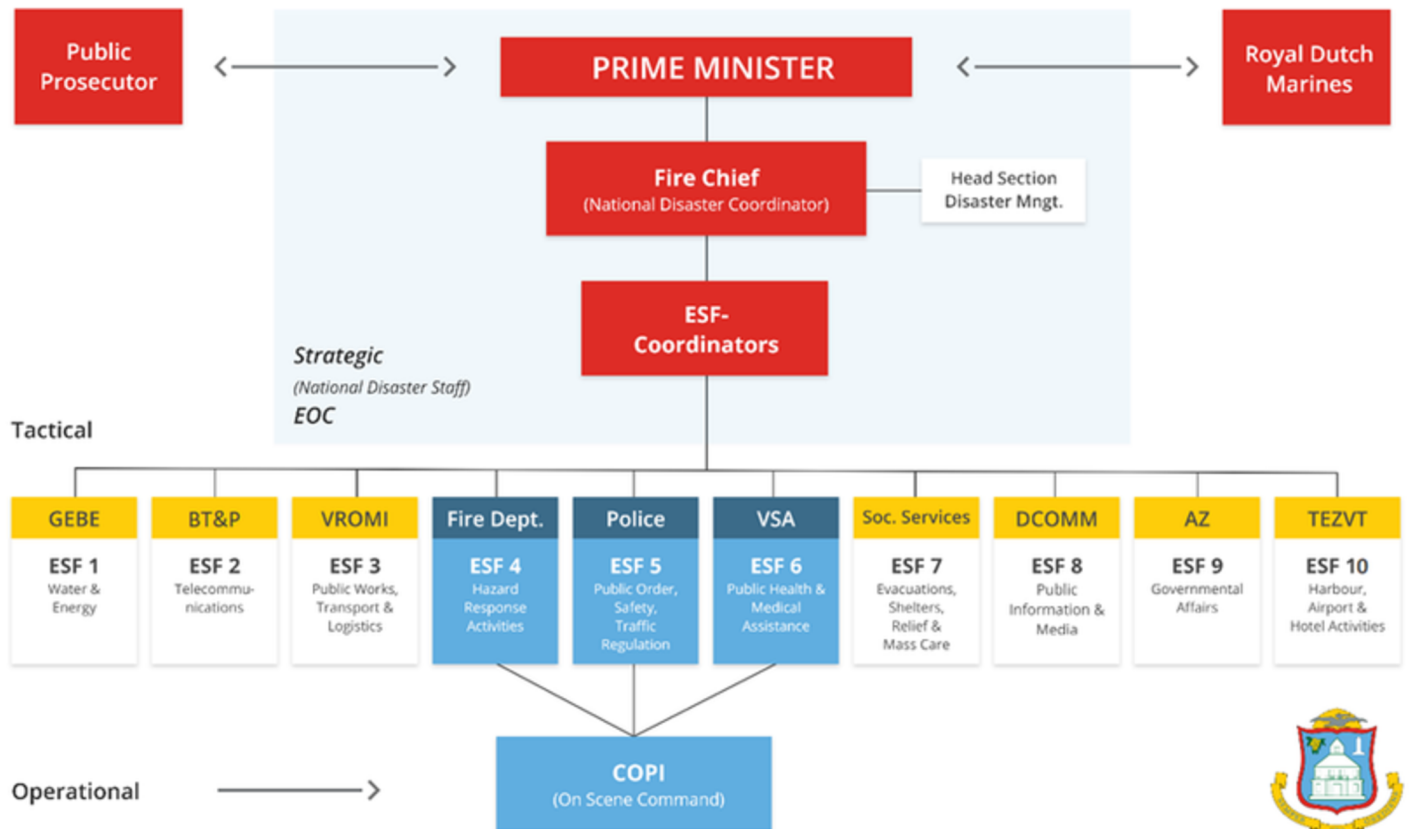
- Cash in small denominations (ATMs and card readers may not work)
- Credit cards
- Important documents in waterproof container:
  - \* Insurance policies (home, auto, medical)
  - \* Medical records and medication list
  - \* Passport, birth certificates, and immigration documents
  - \* Bank account information
  - \* Property deeds, leases, mortgages
  - \* Vehicle registrations and titles
  - \* Social security cards or local ID cards
  - \* Current utility bill (to prove residency)
  - \* List of important contacts (family, friends, doctors)
  - \* Emergency contact information
  - \* Pictures of valuable possessions (for insurance)
  - \* Waterproof document pouch

## BEFORE EVACUATION

- Turn off all utilities at main switches (water, electricity, gas)
- Move valuables to higher locations in your home
- Secure outdoor furniture and items
- Board up windows or close hurricane shutters
- Lock all windows and doors
- Take photos of property condition before leaving
- Notify family and friends of evacuation plans and destination
- Check in with vulnerable neighbors
- Fill bathtub and large containers with water (for non-drinking purposes)
- Set refrigerator and freezer to coldest settings
- Charge all devices fully before departure
- Fill vehicle gas tank
- Withdraw cash from ATM (Small denominations of both Guilders and USD/ Euros)
- Know your nearest hurricane shelter



## ORGANIZATIONAL STRUCTURE DISASTER MANAGEMENT SINT MAARTEN



### The Disaster Management Organization is structured into three levels:

- Operational – On Scene Command (COPI)
- Tactical – Emergency Support Functions (ESF-groepen)
- Strategic – National Disaster Staff (EOC)

### KEY ROLES AND RESPONSIBILITIES

#### Prime Minister:

- Holds supreme command during disasters and major accidents.
- Chairs EOC meetings.
- Communicates EOC decisions to the public via media.
- Can declare an Emergency Situation by decree (based on the Emergency Situation Ordinance).
- May impose a curfew as part of the emergency decree.
- Must inform Parliament, and the governments of the Kingdom, BES, Aruba, and Curaçao.

#### National Disaster Coordinator (Fire Chief)

- Responsible for operational coordination of disaster management.

#### Disaster Staff

- Appointed by the Prime Minister.
- Provides political and administrative oversight.
- Ensures coordination among all response participants.





# EMERGENCY NUMBERS

**Airport (PJIAE)** +1 721 546-7542

**Ambulance Services** 912 or +1 721 542-2111

**Child Protection (Abuse & Neglect)** 918 or +1 721 547-7012

**Coast Guard** 913

**Collective Prevention Services CPS** 914

**Community Development, Family & Humanitarian**

**Affairs (CDFHA)** +1 721 542-0349

**Customs Sint Maarten** 917

**Department of Infrastructure** +1 721 520-6352

**Fire / Disaster Department** 919 or +1 721 542-6001

**Fire Department (Airport)** +1 721 545-4222

**GEBE Hotline** +1 721 544-3100 or +1721 588-3117

**Immigration** +1 721 543-0352 / +1 721 543-0355

**NATIONAL REPORTING CENTER (Human Smuggling)** +1.721.542.2222, ext. 614/604

**Mental Health Foundation** 311 or +1 721 542-1677

**Police Department** 911 or +1 721 542-2224

**Prison and House of Detention** +1 721 543-0280

**Red Cross** +1 721 545-2333

**Safe Haven** 9333

**Simpson Bay Lagoon Authority (SLAC)** +1 721 542-8503 or +1 721 542-8504

**St. Maarten Hospitality & Trade Association (SHTA)** +1 721-542-0108

**St. Maarten Laboratory Services (SLS)** +1 721 542-2518

**St. Maarten Medical Center** 910 or +1 721 543-1111

**St. Maarten Tourist Bureau** +1-721-549-0200

**The Department of Foreign Relations** +1 721 542-0359 / +1 721-542-0640

**Victim Support Services** +1 721-587-6477

**White & Yellow Cross Foundation** +1 721 548-4431

[WWW.SINTMAARTENGOV.ORG/HURRICANE](http://WWW.SINTMAARTENGOV.ORG/HURRICANE)

[WWW.FACEBOOK.COM/SXMGOV](http://WWW.FACEBOOK.COM/SXMGOV)

**TUNE IN TO SXMGOV RADIO 107.9FM**

**YOUTUBE: GOVERNMENT OF SINT MAARTEN**

[WWW.METEOSXM.COM](http://WWW.METEOSXM.COM)

